



RSUG

How To: Visual Web Part 1

Eng. Ismail Enjreny

ismaeel.enjreny@gmail.com

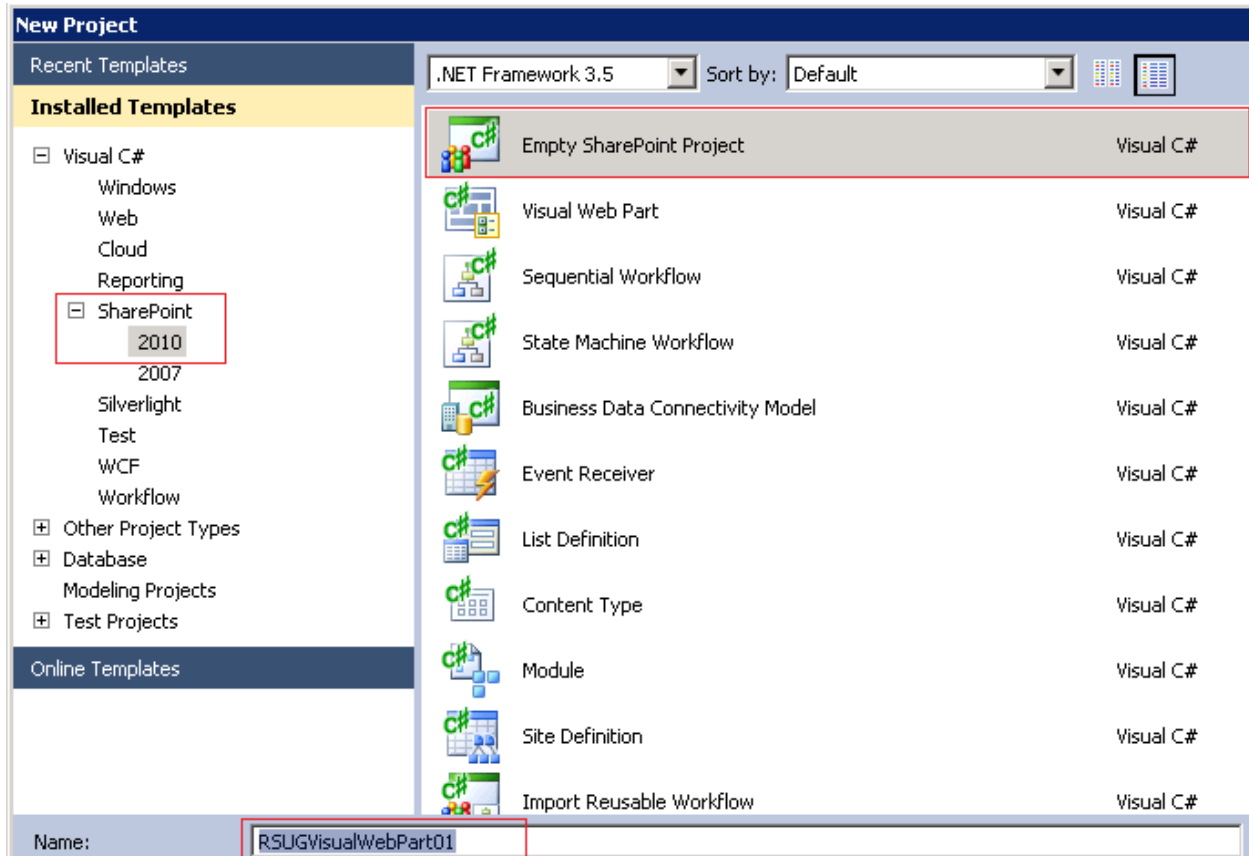
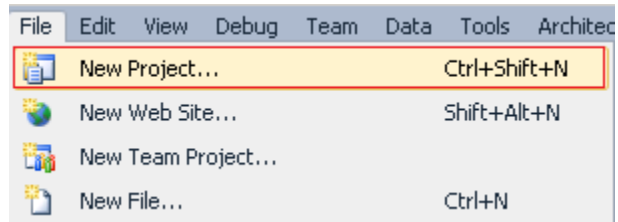
<http://SharePoint4Arab.blogspot.com>

Wednesday, July 27, 2011

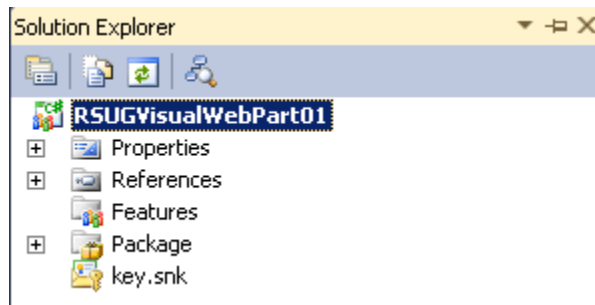
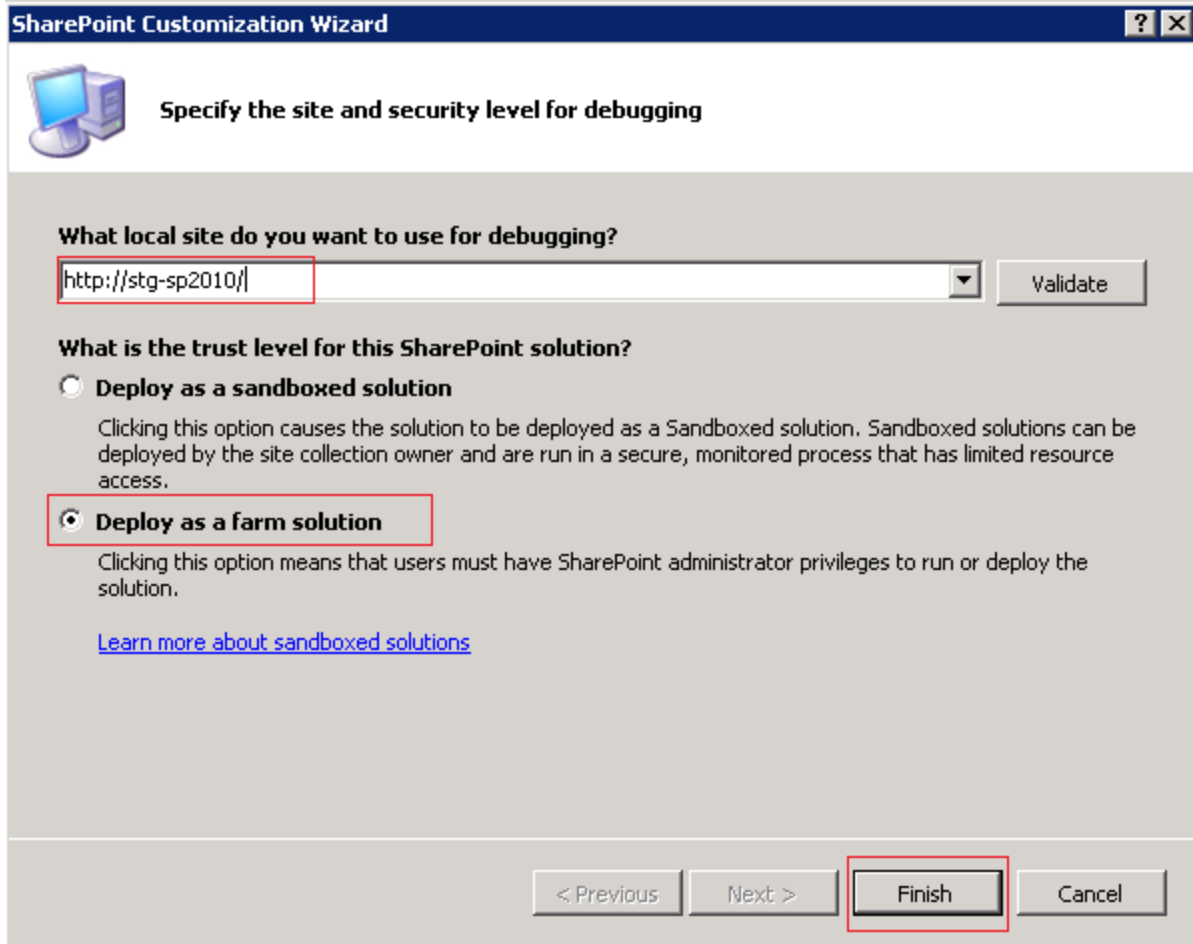
Table of Contents

Create empty SharePoint project	2
Add new visual web part.....	3
Change web part namespace.....	6
Change web part control location	9
Add public property	10
Visual web part localization	11
Deployment and Usage.....	15

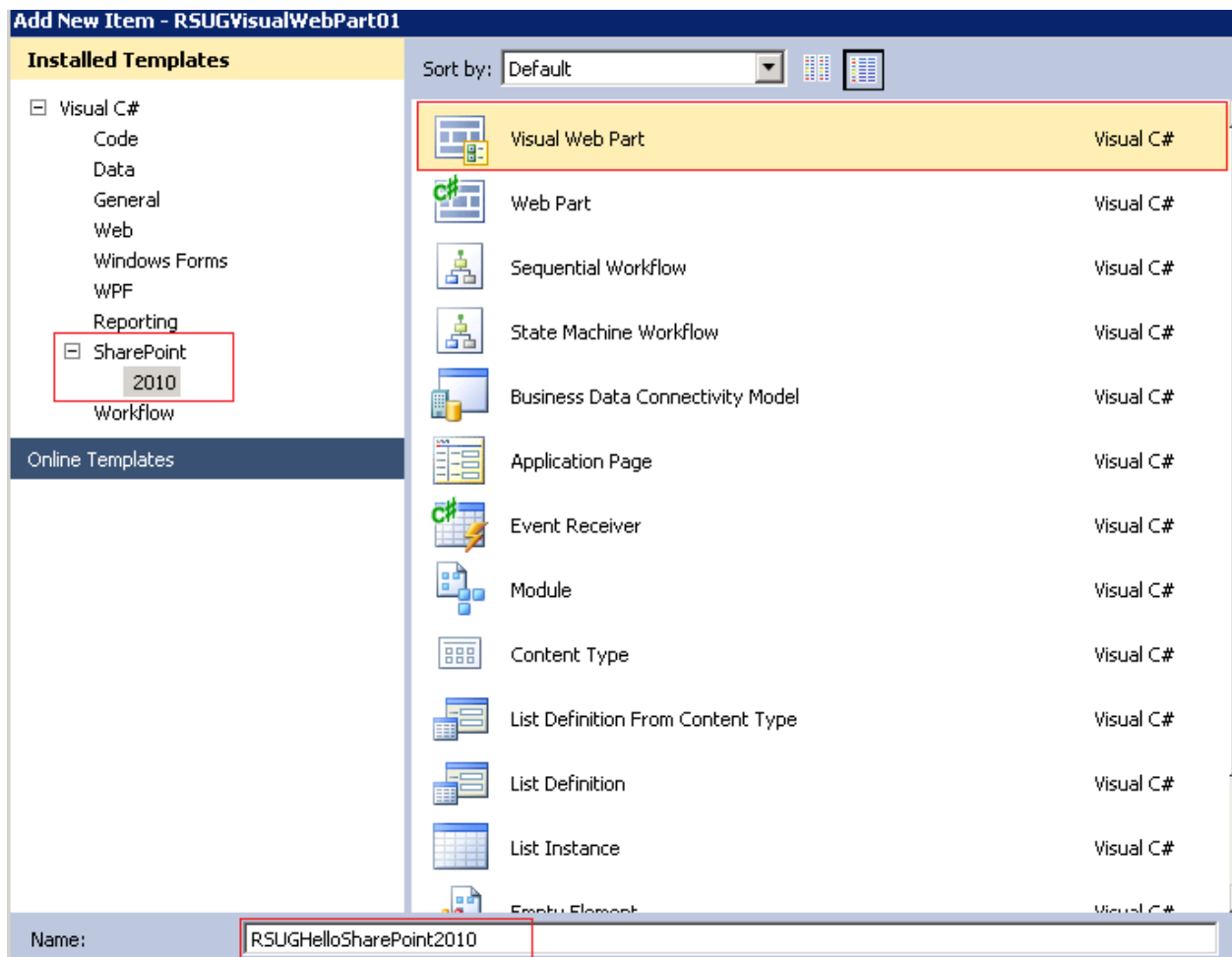
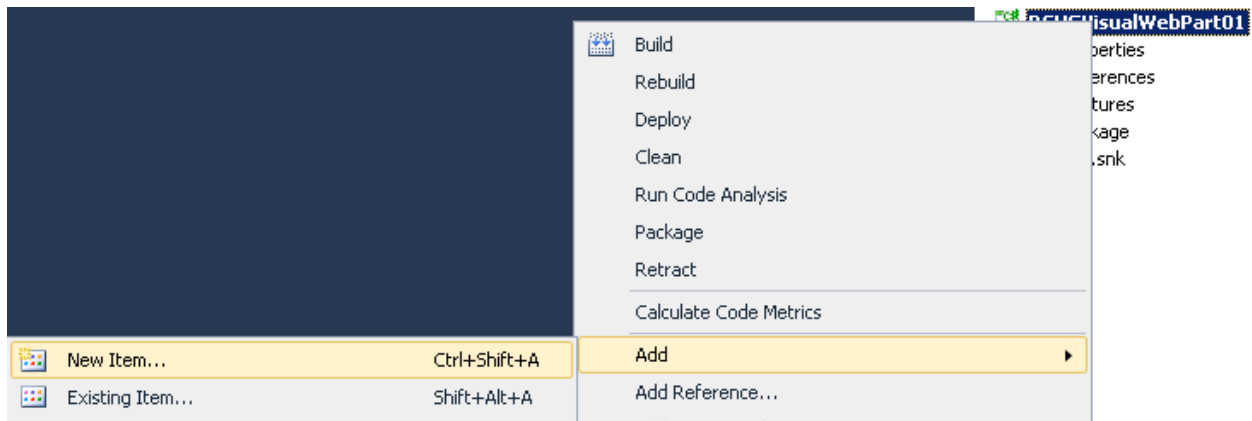
Create empty SharePoint project

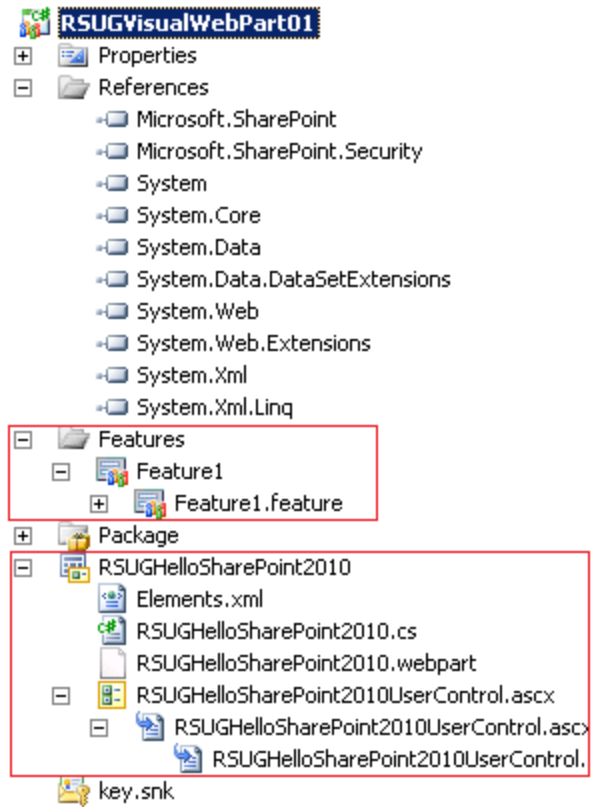


- You should change <http://stg-sp2010> to your URL.

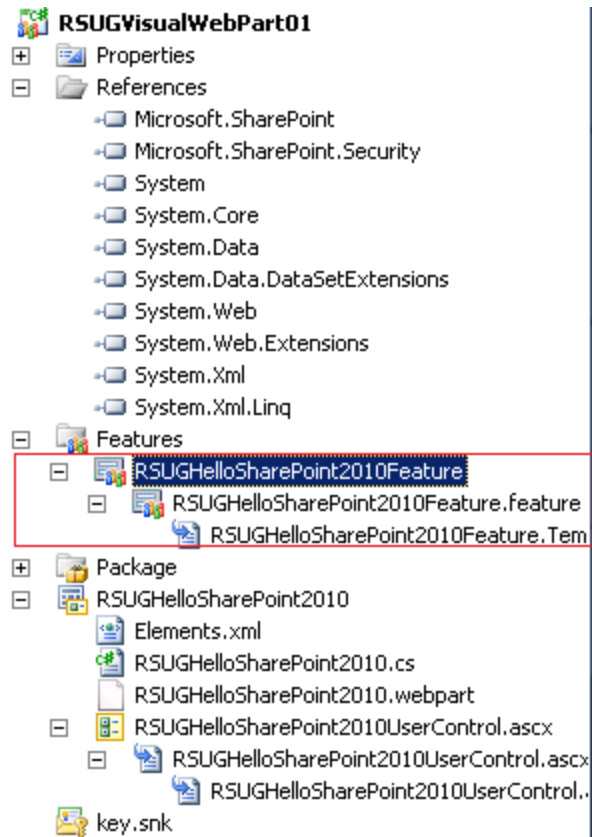


Add new visual web part





- Change Feature1 → RSUGHelloSharePoint2010Feature



Change web part namespace

1. Open RSUGHelloSharePoint2010.cs file and change the name space of RSUGHelloSharePoint2010 class to RSUGVisualWebPart01.

```

using System;
using System.ComponentModel;
using System.Web;
using System.Web.UI;
using System.Web.UI.WebControls;
using System.Web.UI.WebControls.WebParts;
using Microsoft.SharePoint;
using Microsoft.SharePoint.WebControls;

namespace RSUGVisualWebPart01.RSUGHelloSharePoint2010
{
    [ToolboxItemAttribute(false)]
    public class RSUGHelloSharePoint2010 : WebPart
    {

```

```

using System;
using System.ComponentModel;
using System.Web;
using System.Web.UI;
using System.Web.UI.WebControls;
using System.Web.UI.WebControls.WebParts;
using Microsoft.SharePoint;
using Microsoft.SharePoint.WebControls;

namespace RSUGVisualWebPart01
{
    [ToolboxItemAttribute(false)]
    public class RSUGHelloSharePoint2010 : WebPart
    {

```

2. Open RSUGHelloSharePoint2010.webpart file.
3. Change name attribute value to **RSUGVisualWebPart01.RSUGHelloSharePoint2010, \$SharePoint.Project.AssemblyFullName\$**.

```

RSUGHelloSharePoint2010.webpart X
<?xml version="1.0" encoding="utf-8"?>
<webParts>
  <webPart xmlns="http://schemas.microsoft.com/WebPart/v3">
    <metaData>
      <type name="RSUGVisualWebPart01.RSUGHelloSharePoint2010.RSUGHelloSharePoint2010, $SharePoint.Project.AssemblyFullName$" />
      <importErrorMessage>$Resources:core,ImportErrorMessage;</importErrorMessage>
    </metaData>
    <data>
      <properties>
        <property name="Title" type="string">RSUGHelloSharePoint2010</property>
        <property name="Description" type="string">My Visual WebPart</property>
      </properties>
    </data>
  </webPart>
</webParts>

```

```

RSUGHelloSharePoint2010.webpart X
<?xml version="1.0" encoding="utf-8"?>
<webParts>
  <webPart xmlns="http://schemas.microsoft.com/WebPart/v3">
    <metaData>
      <type name="RSUGVisualWebPart01.RSUGHelloSharePoint2010, $SharePoint.Project.AssemblyFullName$" />
      <importErrorMessage>$Resources:core,ImportErrorMessage;</importErrorMessage>
    </metaData>
    <data>
      <properties>
        <property name="Title" type="string">RSUGHelloSharePoint2010</property>
        <property name="Description" type="string">My Visual WebPart</property>
      </properties>
    </data>
  </webPart>
</webParts>

```

4. Open RSUGHelloSharePoint2010UserControl.ascx.cs.
5. Change namespace of **RSUGHelloSharePoint2010UserControl** class to **RSUGVisualWebPart01**.

```

RSUGHelloSharePoint...0UserControl.ascx.cs X
RSUGVisualWebPart01.RSUGHelloSharePoint2010.RSUGHelloSharePoint2010UserControl
using System;
using System.Web.UI;
using System.Web.UI.WebControls;
using System.Web.UI.WebControls.WebParts;

namespace RSUGVisualWebPart01.RSUGHelloSharePoint2010
{
    public partial class RSUGHelloSharePoint2010UserControl : UserControl
    {
        protected void Page_Load(object sender, EventArgs e)
        {
        }
    }
}

```

```

RSUGHelloSharePoint...0UserControl.ascx.cs X
RSUGVisualWebPart01.RSUGHelloSharePoint2010UserControl
using System;
using System.Web.UI;
using System.Web.UI.WebControls;
using System.Web.UI.WebControls.WebParts;

namespace RSUGVisualWebPart01
{
    public partial class RSUGHelloSharePoint2010UserControl : UserControl
    {
        protected void Page_Load(object sender, EventArgs e)
        {
        }
    }
}

```

6. Open RSUGHelloSharePoint2010UserControl.ascx file.
7. Change `Inherits` attribute value to **RSUGVisualWebPart01.RSUGHelloSharePoint2010UserControl**.

```

PublicKeyToken=71e9bce111e9429c" %>
s" Assembly="Microsoft.SharePoint, Version=14.0.0.0, Culture=neutral, PublicKeyToken=71e9bce111e9429c" %>
Assembly="Microsoft.SharePoint, Version=14.0.0.0, Culture=neutral, PublicKeyToken=71e9bce111e9429c" %>
tensions, Version=3.5.0.0, Culture=neutral, PublicKeyToken=31bf3856ad364e35" %>

ages" Assembly="Microsoft.SharePoint, Version=14.0.0.0, Culture=neutral, PublicKeyToken=71e9bce111e9429c" %>
nt2010UserControl.ascx.cs" Inherits="RSUGVisualWebPart01.RSUGHelloSharePoint2010.RSUGHelloSharePoint2010UserControl" %>

Culture=neutral, PublicKeyToken=71e9bce111e9429c" %>
ePoint.WebControls" Assembly="Microsoft.SharePoint, Version=14.0.0.0, Culture=neutral, PublicKeyToken=71e9bce111e9429c" %>
Point.Utilities" Assembly="Microsoft.SharePoint, Version=14.0.0.0, Culture=neutral, PublicKeyToken=71e9bce111e9429c" %>
ly="System.Web.Extensions, Version=3.5.0.0, Culture=neutral, PublicKeyToken=31bf3856ad364e35" %>

arePoint.WebPartPages" Assembly="Microsoft.SharePoint, Version=14.0.0.0, Culture=neutral, PublicKeyToken=71e9bce111e9429c" %>
RSUGHelloSharePoint2010UserControl.ascx.cs" Inherits="RSUGVisualWebPart01.RSUGHelloSharePoint2010UserControl" %>

```

- Open SharePointProjectItem.spdata file.
- Change Namespace attribute value to **RSUGVisualWebPart01**.

```

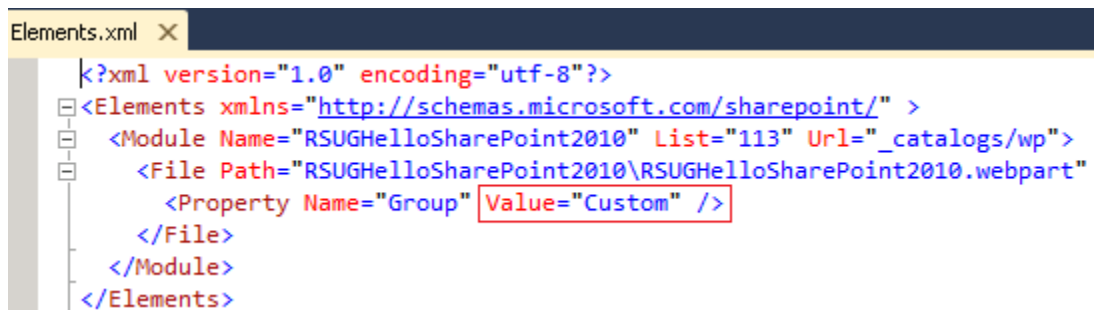
<SafeControls>
  <SafeControl Name="SafeControlEntry1" Assembly="$SharePoint.Project.AssemblyFullName$" Namespace="RSUGVisualWebPart01.RSUGHelloSharePoint2010" TypeName="" />
</SafeControls>
</ProjectItem>

<SafeControls>
  <SafeControl Name="SafeControlEntry1" Assembly="$SharePoint.Project.AssemblyFullName$" Namespace="RSUGVisualWebPart01" TypeName="" />
</SafeControls>
</ProjectItem>

```

Change web part control location

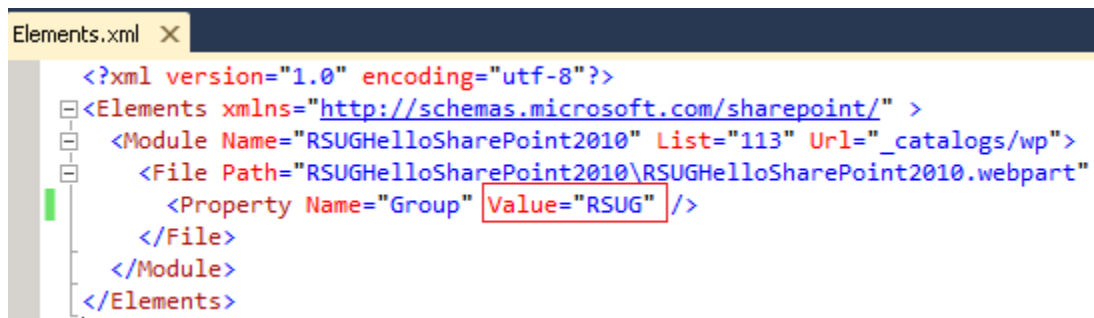
- Open Elements.xml file.
- Change Value attribute of Group property value to **RSUG**.



```

Elements.xml X
<?xml version="1.0" encoding="utf-8"?>
<Elements xmlns="http://schemas.microsoft.com/sharepoint/" >
  <Module Name="RSUGHelloSharePoint2010" List="113" Url="_catalogs/wp">
    <File Path="RSUGHelloSharePoint2010\RSUGHelloSharePoint2010.webpart"
      <Property Name="Group" Value="Custom" />
    </File>
  </Module>
</Elements>

```



```

Elements.xml X
<?xml version="1.0" encoding="utf-8"?>
<Elements xmlns="http://schemas.microsoft.com/sharepoint/" >
  <Module Name="RSUGHelloSharePoint2010" List="113" Url="_catalogs/wp">
    <File Path="RSUGHelloSharePoint2010\RSUGHelloSharePoint2010.webpart"
      <Property Name="Group" Value="RSUG" />
    </File>
  </Module>
</Elements>

```

- Open RSUGHelloSharePoint2010.cs file.
- Change value of `_ascxPath` variable to `@"/_CONTROLTEMPLATES/RSUG/RSUGHelloSharePoint2010UserControl.ascx"`.

```

[ToolboxItemAttribute(false)]
public class RSUGHelloSharePoint2010 : WebPart
{
  // Visual Studio might automatically update this path when you change the Visual Web Part project item.
  private const string _ascxPath = @"/_CONTROLTEMPLATES/RSUGVisualWebPart01/RSUGHelloSharePoint2010/RSUGHelloSharePoint2010UserControl.ascx";

  protected override void CreateChildControls()
  {
    Control control = Page.LoadControl(_ascxPath);
    Controls.Add(control);
  }
}

```

```

[ToolboxItemAttribute(false)]
public class RSUGHelloSharePoint2010 : WebPart
{
    // Visual Studio might automatically update this path when you change the Visual Web Part project item.
    private const string _ascxPath = @"~/_CONTROLTEMPLATES/RSUG/RSUGHelloSharePoint2010UserControl.ascx";

    protected override void CreateChildControls()
    {
        Control control = Page.LoadControl(_ascxPath);
        Controls.Add(control);
    }
}

```

5. Open **SharePointProjectItem.spdata** file and change value of Target attribute to **CONTROLTEMPLATES\RSUG**.

```

<Files>
  <ProjectItemFile Source="Elements.xml" Target="RSUGHelloSharePoint2010\" Type="ElementManifest" />
  <ProjectItemFile Source="RSUGHelloSharePoint2010.webpart" Target="RSUGHelloSharePoint2010\" Type="ElementFile" />
  <ProjectItemFile Source="RSUGHelloSharePoint2010UserControl.ascx" Target="CONTROLTEMPLATES\RSUG\RSUGHelloSharePoint2010\" />
</Files>

<Files>
  <ProjectItemFile Source="Elements.xml" Target="RSUGHelloSharePoint2010\" Type="ElementManifest" />
  <ProjectItemFile Source="RSUGHelloSharePoint2010.webpart" Target="RSUGHelloSharePoint2010\" Type="ElementFile" />
  <ProjectItemFile Source="RSUGHelloSharePoint2010UserControl.ascx" Target="CONTROLTEMPLATES\RSUG\" Type="TemplateFile" />
</Files>

```

Add public property

1. Open **RSUGHelloSharePoint2010UserControl.ascx** file and add the following code to end of the file:

```
<asp:Label runat="server" ID="lblMyHello" />
```

2. Open **RSUGHelloSharePoint2010UserControl.ascx.cs** file and add the following code:

```

public partial class RSUGHelloSharePoint2010UserControl : UserControl
{
    public string MyHello { get; set; }

    protected void Page_Load(object sender, EventArgs e)
    {
        lblMyHello.Text = this.MyHello;
    }
}

```

3. Open **RSUGHelloSharePoint2010.cs** file and add MyHello public property as following:

```

[ToolboxItemAttribute(false)]
public class RSUGHelloSharePoint2010 : WebPart
{
    // Visual Studio might automatically update this path when you change
    private const string _ascxPath = @"~/_CONTROLTEMPLATES/RSUG/RSUGHello

    protected override void CreateChildControls()
    {
        RSUGHelloSharePoint2010UserControl control = Page.LoadControl(_asc
        Controls.Add(control);
    }

    [System.Web.UI.WebControls.WebParts.WebBrowsable(true),
    System.Web.UI.WebControls.WebParts.WebDisplayName("Text to display"),
    System.Web.UI.WebControls.WebParts.Personalizable(),
    System.ComponentModel.Category("Settings")]
    public string MyHello { get; set; }
}

```

4. Update **CreateChildControls** method code to be as following:

```

[ToolboxItemAttribute(false)]
public class RSUGHelloSharePoint2010 : WebPart
{
    // Visual Studio might automatically update this path when you change the Visual Web Part project item.
    private const string _ascxPath = @"~/_CONTROLTEMPLATES/RSUG/RSUGHelloSharePoint2010UserControl.ascx";

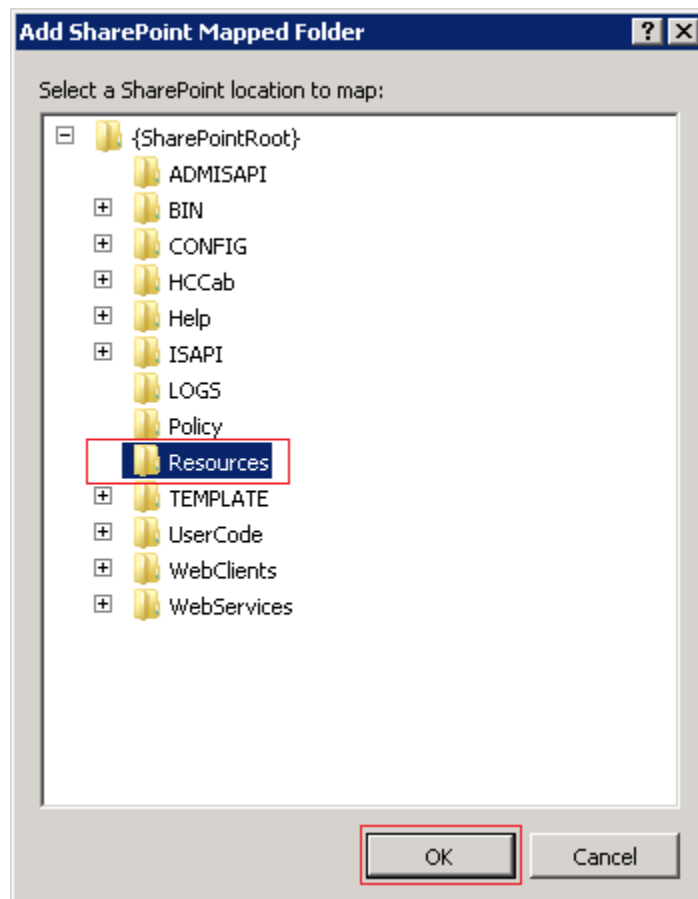
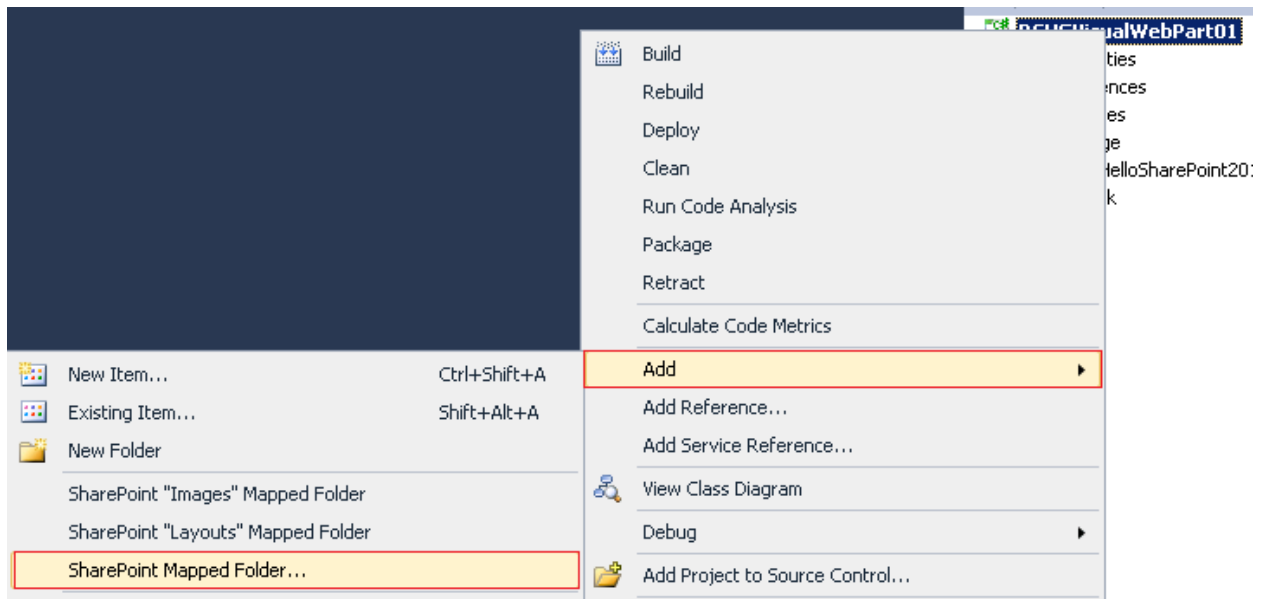
    protected override void CreateChildControls()
    {
        RSUGHelloSharePoint2010UserControl control = Page.LoadControl(_ascxPath) as RSUGHelloSharePoint2010UserControl;
        control.MyHello = this.MyHello;
        Controls.Add(control);
    }

    [System.Web.UI.WebControls.WebParts.WebBrowsable(true),
    System.Web.UI.WebControls.WebParts.WebDisplayName("Text to display"),
    System.Web.UI.WebControls.WebParts.Personalizable(),
    System.ComponentModel.Category("Settings")]
    public string MyHello { get; set; }
}

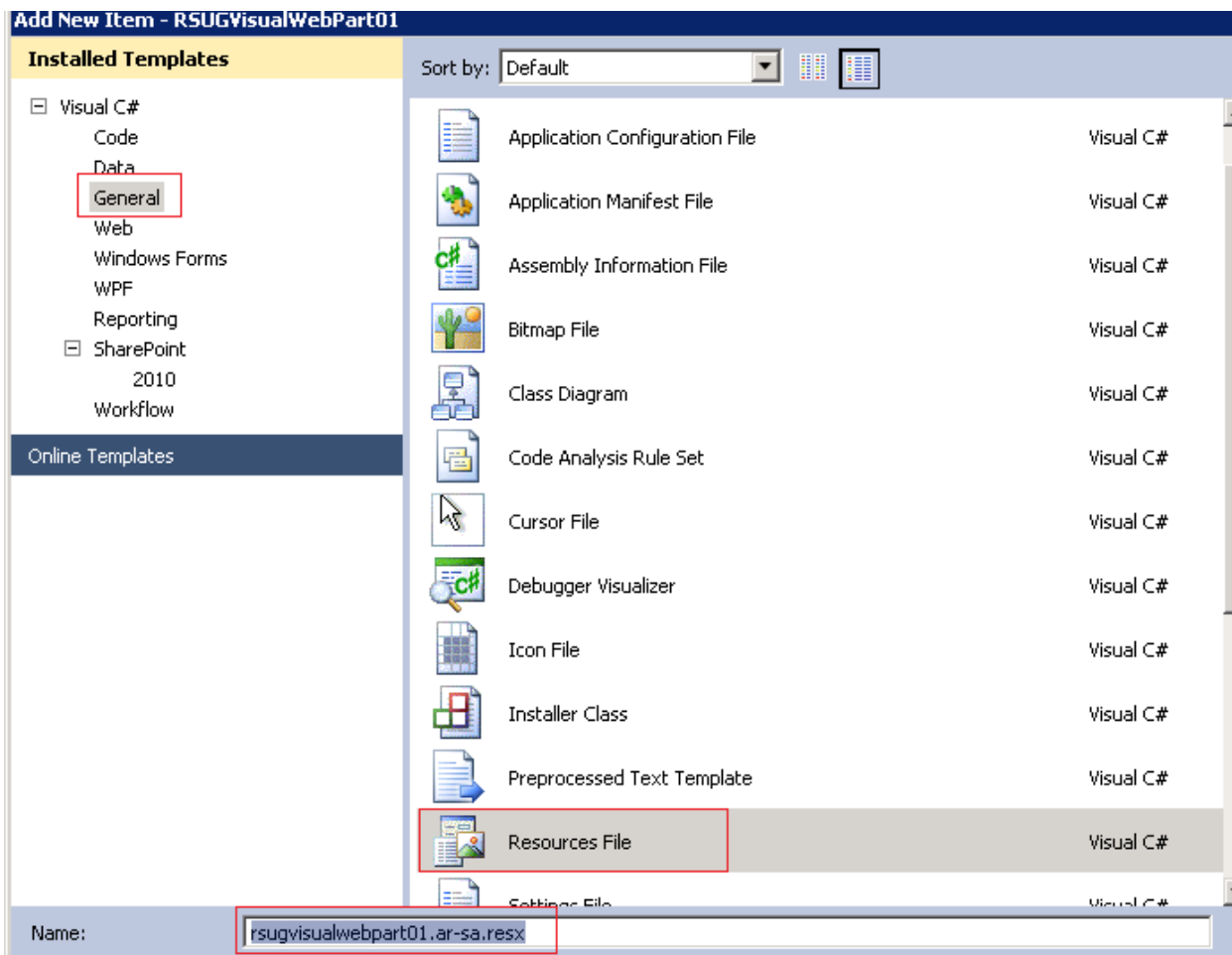
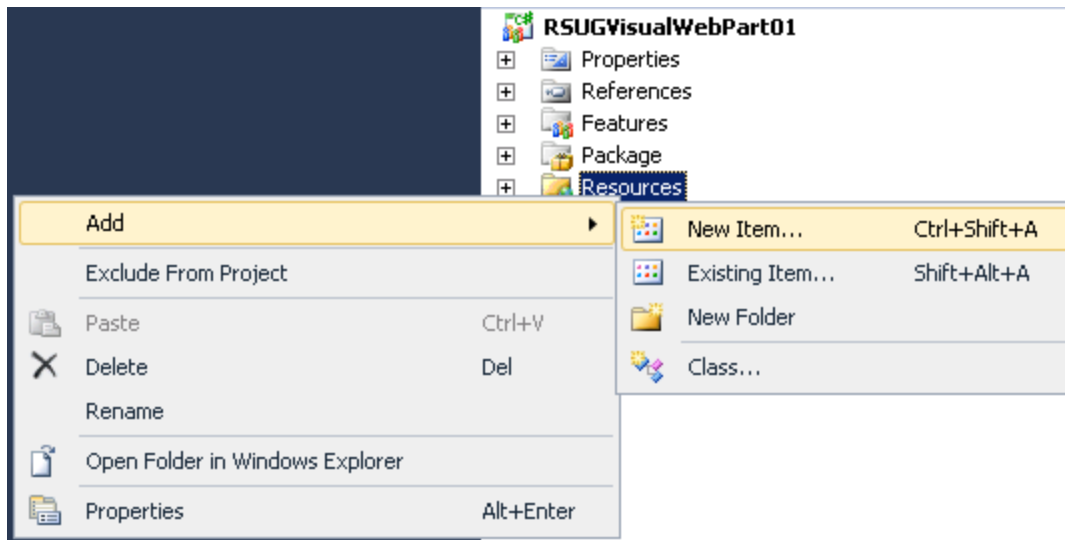
```

Visual web part localization

1. Add mapping to resources folder.



2. Add resource file "rsugvisualwebpart01.ar-sa.resx".



Name	Value
RSUG_GroupName	مجموعة شيربونت الرياض
RSUG_VWP_Title	أهلاً شيربونت
String1	

- Open Elements.xml file and change value of Value property as following:

```

Elements.xml
<?xml version="1.0" encoding="utf-8"?>
<Elements xmlns="http://schemas.microsoft.com/sharepoint/" >
  <Module Name="RSUGHelloSharePoint2010" List="113" Url="_catalogs/wp">
    <File Path="RSUGHelloSharePoint2010\RSUGHelloSharePoint2010.webpart" Url="RSUGHello
      <Property Name="Group" Value="$Resources:rsugvisualwebpart01,RSUG_GroupName;" />
    </File>
  </Module>
</Elements>

```

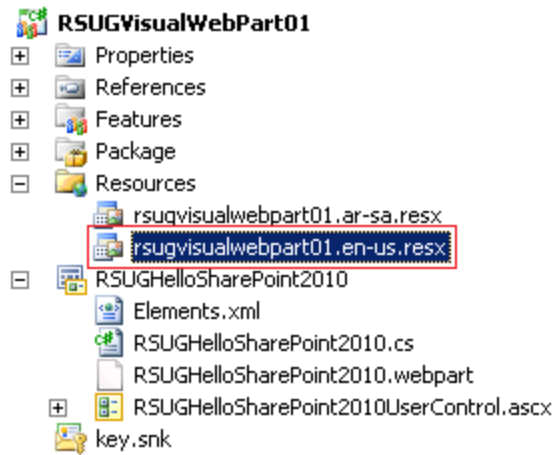
- Open RSUGHelloSharePoint2010.webpart file and change Title property value as following:

```

RSUGHelloSharePoint2010.webpart
<?xml version="1.0" encoding="utf-8"?>
<webParts>
  <webPart xmlns="http://schemas.microsoft.com/WebPart/v3">
    <metaData>
      <type name="RSUGVisualWebPart01.RSUGHelloSharePoint2010, $SharePoint.Project.AssemblyFullName$" />
      <importErrorMessage>$Resources:core,ImportErrorMessage;</importErrorMessage>
    </metaData>
    <data>
      <properties>
        <property name="Title" type="string">$Resources:rsugvisualwebpart01,RSUG_VWP_Title;</property>
        <property name="Description" type="string">My Visual WebPart</property>
      </properties>
    </data>
  </webPart>
</webParts>

```

- Take copy from **rsugvisualwebpart01.ar-sa.resx** file rename it to **rsugvisualwebpart01.en-us.resx**.

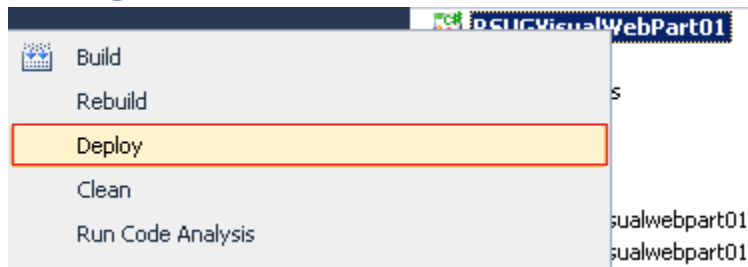


rsugvisualwebpart01.en-us.resx

Strings Add Resource Remove Resource Access Modifier: No c

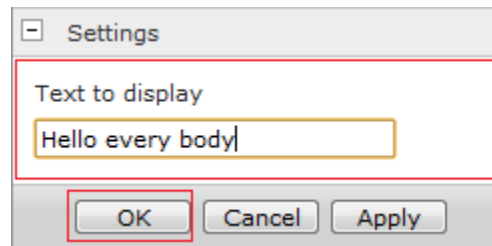
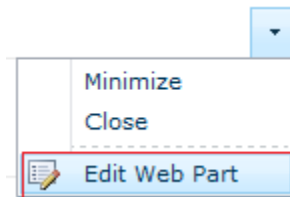
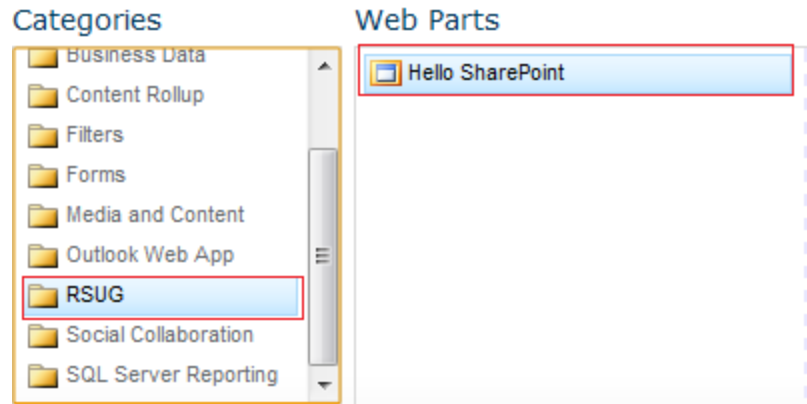
Name	Value
RSUG_GroupName	RSUG
RSUG_VWP_Title	Hello SharePoint

Deployment and Usage



1. Create web part page and press “Add web part” on one of web part zones.





Hello SharePoint

Hello every body